

ROOF-V Wentylator dachowy



Zastosowanie

Wentylatory dachowe wyciągowe ROOF-V przeznaczone są do wentylacji:

- magazynów, hal sklepowych i przemysłowych, budynków gospodarczych w rolnictwie, etc.

Ze względu na wysoką odporność temperaturową zalecane są zwłaszcza jako odciąg:

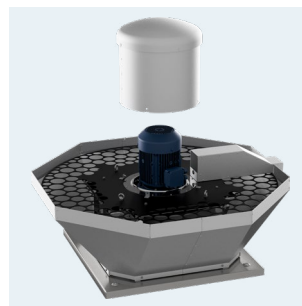
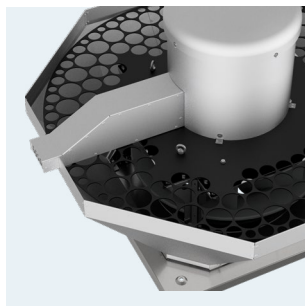
- z nad rusztów, z okapów w przemyśle mięsnym oraz gastronomii.

Konstrukcja

- wirnik z łopatkami pochylonymi do tyłu, wykonane z blachy aluminiowej,
- podstawa i obudowa zewnętrzna wykonana z blachy aluminiowej,
- wsporniki i płyta nośna silnika wykonana z blachy nierdzewnej,
- osłona silnika wykonana z blachy aluminiowej,
- siatka ochronna z blachy nierdzewnej,
- przystosowany do pracy w pozycji pionowej,
- montaż na dachach płaskich,
- temperatura pracy od -20°C do $+120^{\circ}\text{C}$.

Silnik elektryczny

- asynchroniczny, jednofazowy, 230V, 50Hz (o mocy do 1,1 kW),
- asynchroniczny, trójfazowy, 230/400V, 50Hz (o mocy do 3 kW),
- asynchroniczny, trójfazowy, 400/690V, 50Hz (o mocy od 4 kW),
- stopień ochrony IP55,
- klasa izolacji F,
- przystosowany do regulacji częstotliwościowej (silniki trójfazowe).

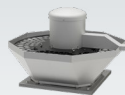


POWIĄZANE PRODUKTY



ROOF-H
Wentylator
dachowy
z wyrzutem
poziomym



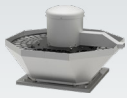


DANE TECHNICZNE

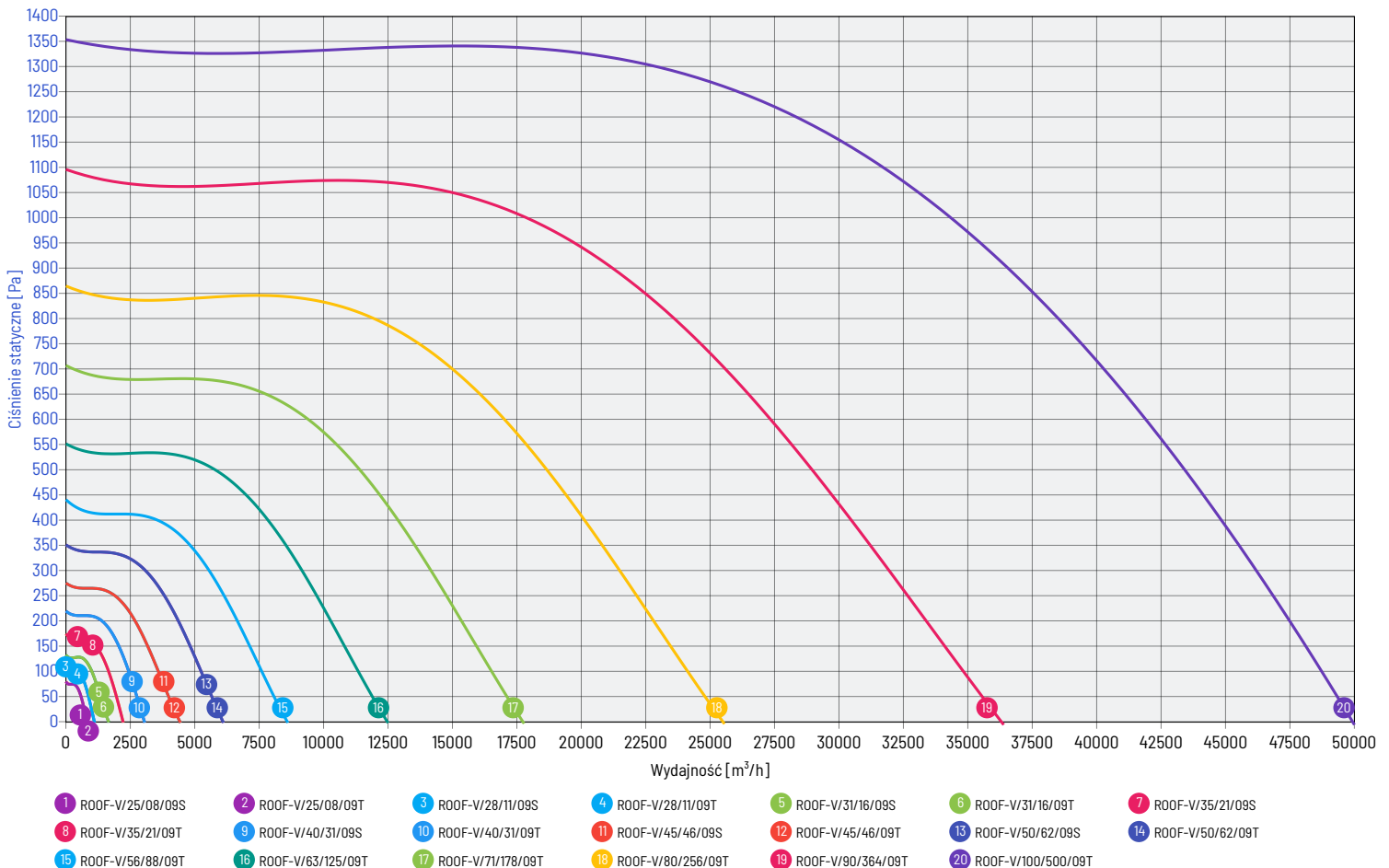
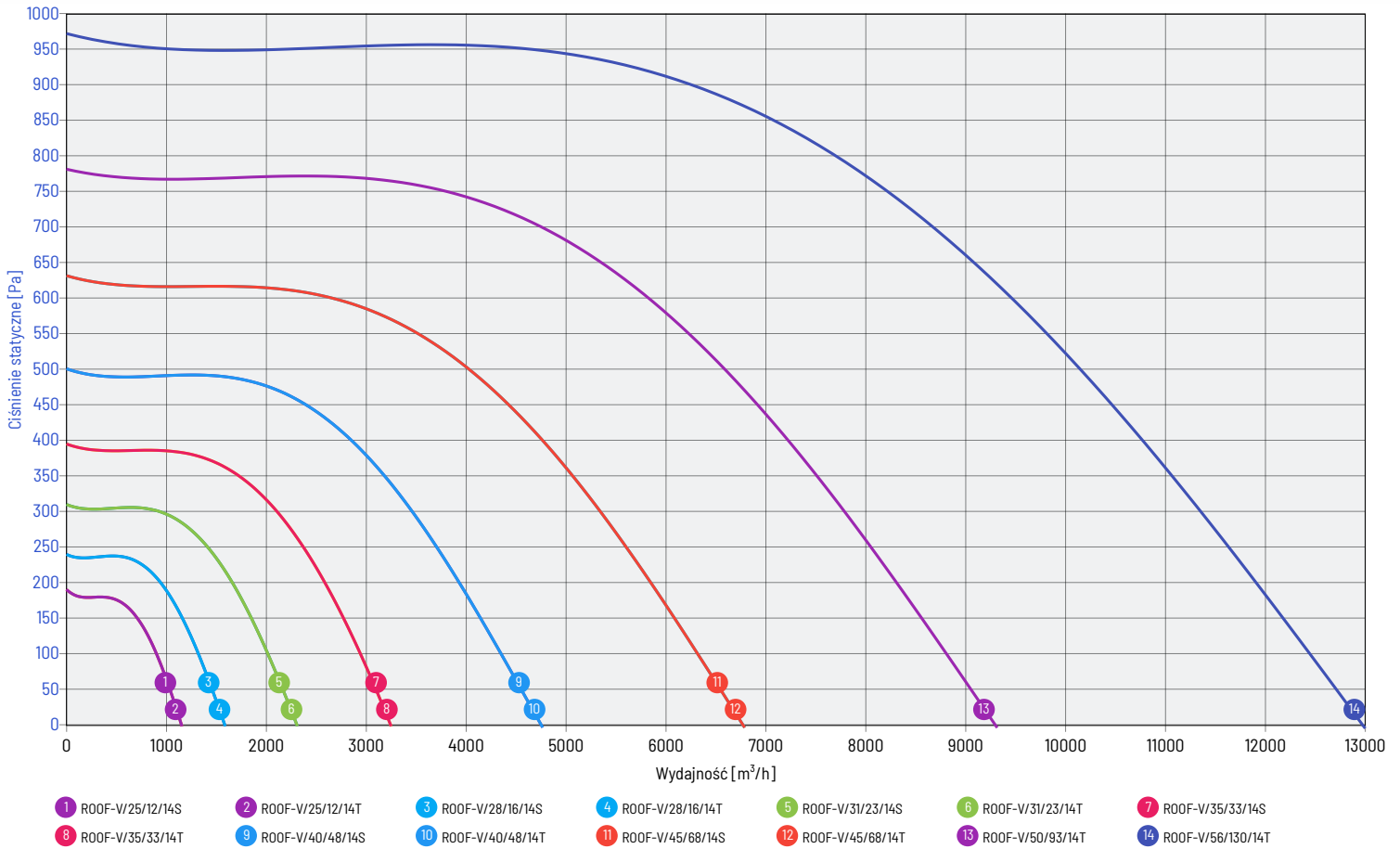
model wentylatora	wydajność maksymalna	ciśnienie maksymalne	prędkość obrotowa	napięcie nominalne	natężenie znamionowe**	moc silnika	poziom ciśnienia akust.*	masa jednostki	numer artykułu
SILNIKI CZTEROBIEGUNOWE JEDNOFAZOWE									
ROOF-V/25/12/14S	1 150 m ³ /h	190 Pa	1 420 rpm	1~230 V	1,4 A	0,18 kW	52 dB(A)	19,0 kg	43534496
ROOF-V/28/16/14S	1 600 m ³ /h	240 Pa	1 430 rpm	1~230 V	2,5 A	0,25 kW	55 dB(A)	21,0 kg	43534501
ROOF-V/31/23/14S	2 300 m ³ /h	310 Pa	1 420 rpm	1~230 V	2,8 A	0,37 kW	58 dB(A)	27,0 kg	43534506
ROOF-V/35/33/14S	3 280 m ³ /h	395 Pa	1 430 rpm	1~230 V	3,8 A	0,55 kW	61 dB(A)	35,0 kg	43534511
ROOF-V/40/48/14S	4 780 m ³ /h	500 Pa	1 430 rpm	1~230 V	4,1 A	0,75 kW	63 dB(A)	41,0 kg	43534516
ROOF-V/45/68/14S	6 800 m ³ /h	630 Pa	1 300 rpm	1~230 V	7,5 A	1,1 kW	66 dB(A)	50,0 kg	43534521
SILNIKI SZESCIOBIEGUNOWE JEDNOFAZOWE									
ROOF-V/25/08/09S	760 m ³ /h	80 Pa	880 rpm	1~230 V	1,4 A	0,12 kW	51 dB(A)	20,0 kg	43534498
ROOF-V/28/11/09S	1 060 m ³ /h	110 Pa	880 rpm	1~230 V	1,4 A	0,12 kW	53 dB(A)	20,0 kg	43534503
ROOF-V/31/16/09S	1 570 m ³ /h	135 Pa	880 rpm	1~230 V	1,4 A	0,12 kW	56 dB(A)	25,0 kg	43534508
ROOF-V/35/21/09S	2 140 m ³ /h	175 Pa	920 rpm	1~230 V	1,6 A	0,18 kW	58 dB(A)	31,0 kg	43534513
ROOF-V/40/31/09S	3 080 m ³ /h	220 Pa	940 rpm	1~230 V	2,0 A	0,25 kW	61 dB(A)	37,0 kg	43534518
ROOF-V/45/46/09S	4 570 m ³ /h	275 Pa	930 rpm	1~230 V	2,9 A	0,37 kW	64 dB(A)	40,0 kg	43534523
ROOF-V/50/62/09S	6 180 m ³ /h	350 Pa	940 rpm	1~230 V	5,2 A	0,75 kW	67 dB(A)	60,0 kg	43534528
SILNIKI CZTEROBIEGUNOWE TROJFAZOWE									
ROOF-V/25/12/14T	1 150 m ³ /h	190 Pa	1 400 rpm	3~400 V	0,55 A	0,18 kW	52 dB(A)	19,0 kg	43534495
ROOF-V/28/16/14T	1 600 m ³ /h	240 Pa	1 410 rpm	3~400 V	0,8 A	0,25 kW	55 dB(A)	22,0 kg	43534500
ROOF-V/31/23/14T	2 300 m ³ /h	310 Pa	1 410 rpm	3~400 V	1,1 A	0,37 kW	58 dB(A)	27,0 kg	43534505
ROOF-V/35/33/14T	3 280 m ³ /h	395 Pa	1 420 rpm	3~400 V	1,6 A	0,55 kW	61 dB(A)	36,0 kg	43534510
ROOF-V/40/48/14T	4 780 m ³ /h	500 Pa	1 430 rpm	3~400 V	2,1 A	0,75 kW	63 dB(A)	41,0 kg	43534515
ROOF-V/45/68/14T	6 800 m ³ /h	630 Pa	1 430 rpm	3~400 V	2,5 A	1,1 kW	66 dB(A)	56,0 kg	43534520
ROOF-V/50/93/14T	9 300 m ³ /h	780 Pa	1 450 rpm	3~400 V	4,6 A	2,2 kW	69 dB(A)	80,0 kg	43534525
ROOF-V/56/130/14T	13 000 m ³ /h	970 Pa	1 460 rpm	3~400 V	6,7 A	3,0 kW	73 dB(A)	91,0 kg	43534530
SILNIKI SZESCIOBIEGUNOWE TROJFAZOWE									
ROOF-V/25/08/09T	760 m ³ /h	80 Pa	870 rpm	3~400 V	0,65 A	0,12 kW	51 dB(A)	21,0 kg	43534497
ROOF-V/28/11/09T	1 060 m ³ /h	110 Pa	870 rpm	3~400 V	0,65 A	0,12 kW	53 dB(A)	21,0 kg	43534502
ROOF-V/31/16/09T	1 570 m ³ /h	135 Pa	870 rpm	3~400 V	0,65 A	0,12 kW	56 dB(A)	26,0 kg	43534507
ROOF-V/35/21/09T	2 140 m ³ /h	175 Pa	900 rpm	3~400 V	0,7 A	0,18 kW	58 dB(A)	31,0 kg	43534512
ROOF-V/40/31/09T	3 080 m ³ /h	220 Pa	880 rpm	3~400 V	1,0 A	0,25 kW	61 dB(A)	36,0 kg	43534517
ROOF-V/45/46/09T	4 570 m ³ /h	275 Pa	880 rpm	3~400 V	1,3 A	0,37 kW	64 dB(A)	44,0 kg	43534522
ROOF-V/50/62/09T	6 180 m ³ /h	350 Pa	940 rpm	3~400 V	2,0 A	0,75 kW	67 dB(A)	62,0 kg	43534527
ROOF-V/56/88/09T	8 700 m ³ /h	440 Pa	940 rpm	3~400 V	2,8 A	1,1 kW	71 dB(A)	76,0 kg	43534532
ROOF-V/63/125/09T	12 490 m ³ /h	550 Pa	965 rpm	3~400 V	5,0 A	2,2 kW	72 dB(A)	118,0 kg	43534537
ROOF-V/71/178/09T	17 770 m ³ /h	705 Pa	965 rpm	3~400 V	6,2 A	3,0 kW	78 dB(A)	158,0 kg	43534542
ROOF-V/80/256/09T	25 600 m ³ /h	860 Pa	960 rpm	3~400 V	13,3 A	5,5 kW	82 dB(A)	188,0 kg	43534547
ROOF-V/90/364/09T	36 400 m ³ /h	1 090 Pa	970 rpm	3~400 V	21,4 A	11,0 kW	86 dB(A)	335,0 kg	43534552
ROOF-V/100/500/09T	50 000 m ³ /h	1 350 Pa	980 rpm	3~400 V	36,4 A	18,5 kW	89 dB(A)	500,0 kg	43534557

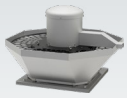
*pomiar wykonany w odległości 1,5m od wylotu, dla $\alpha = 2/3 \cdot \alpha_{max}$

**wartość prądu znamionowego może się różnić w zależności od producenta zastosowanego silnika elektrycznego.

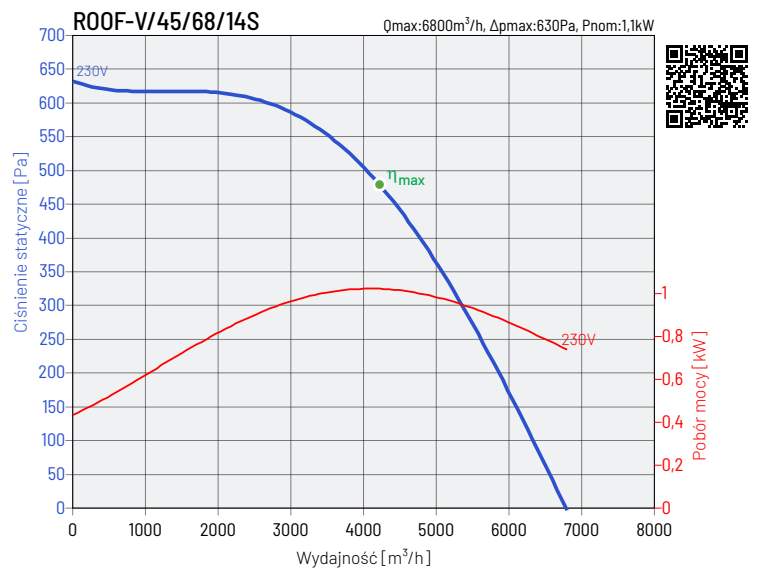
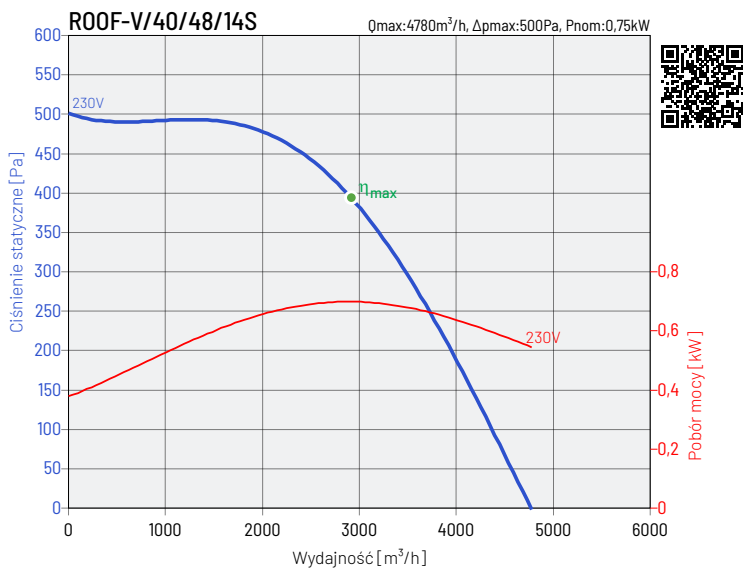
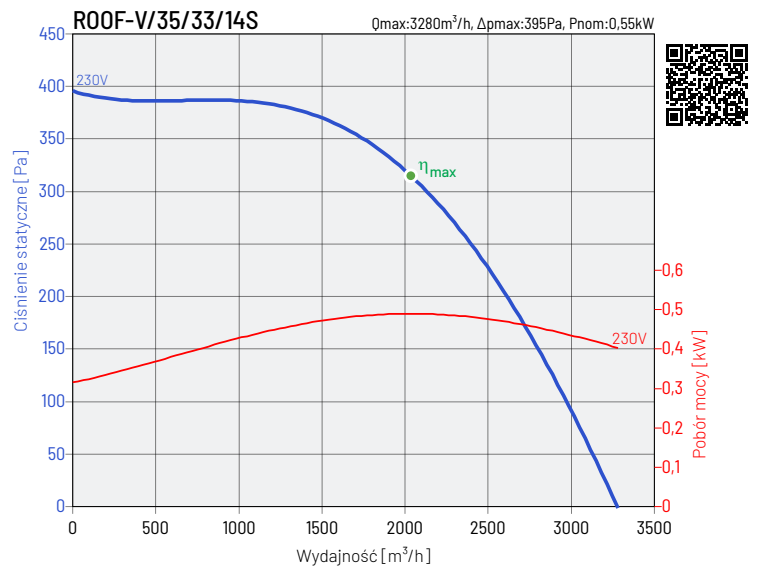
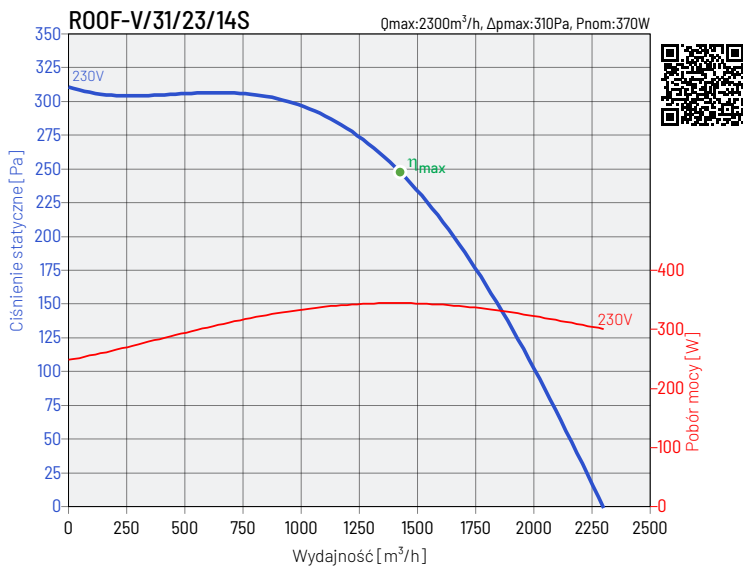
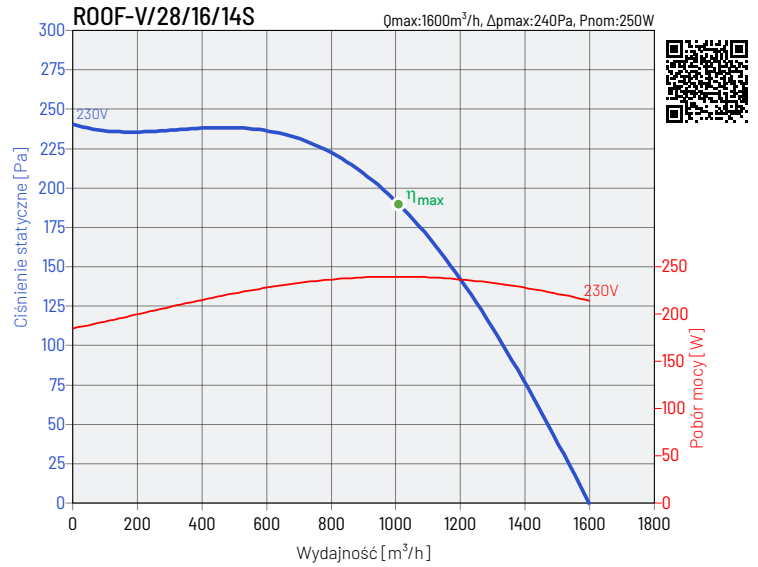
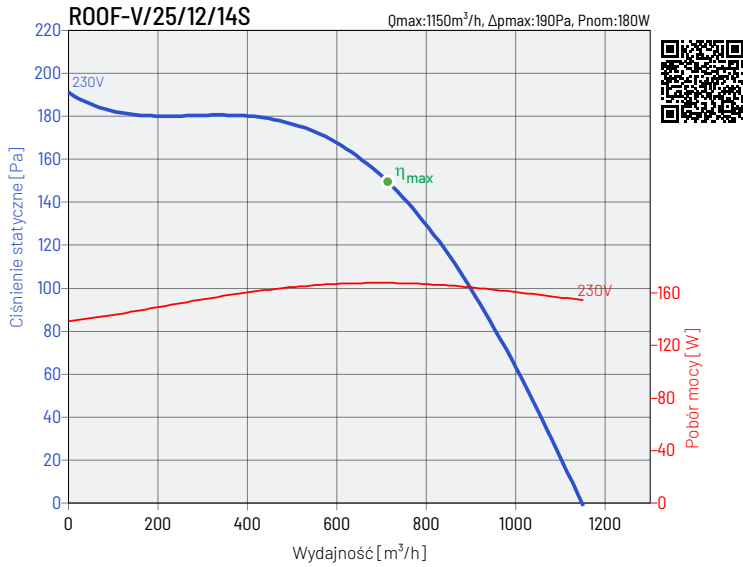


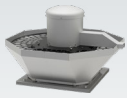
CHARAKTERYSTYKI PRACY WENTYLATORÓW



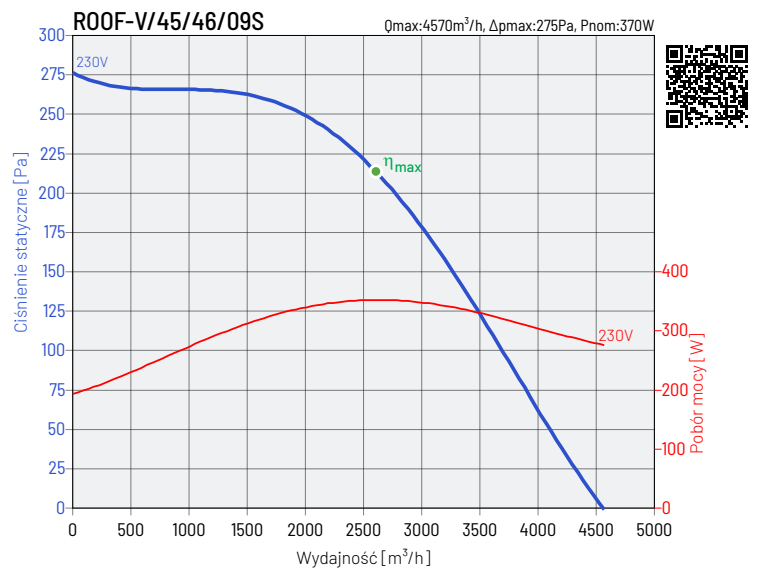
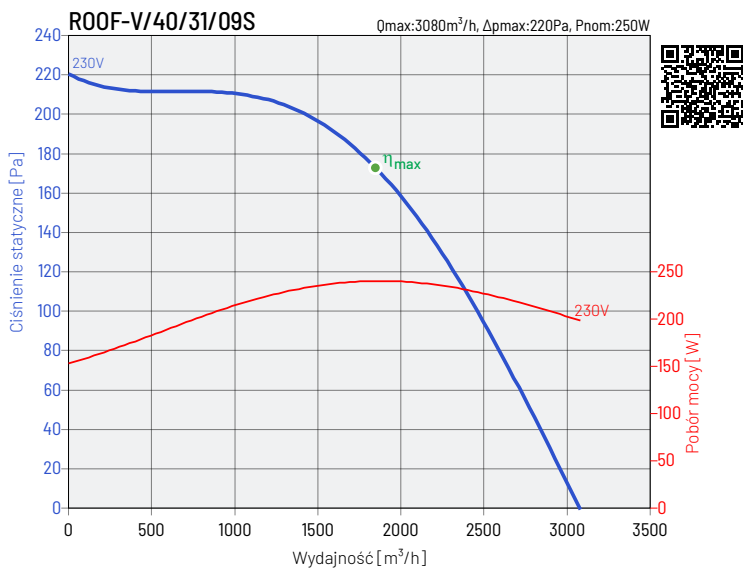
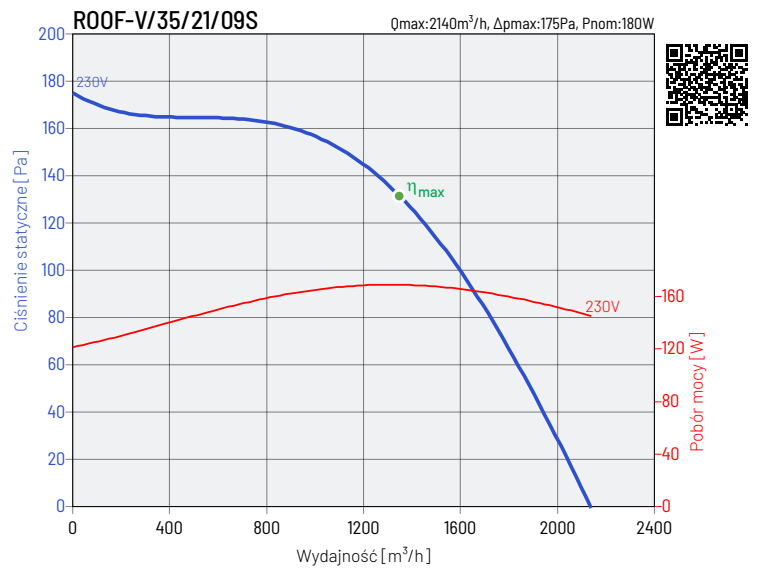
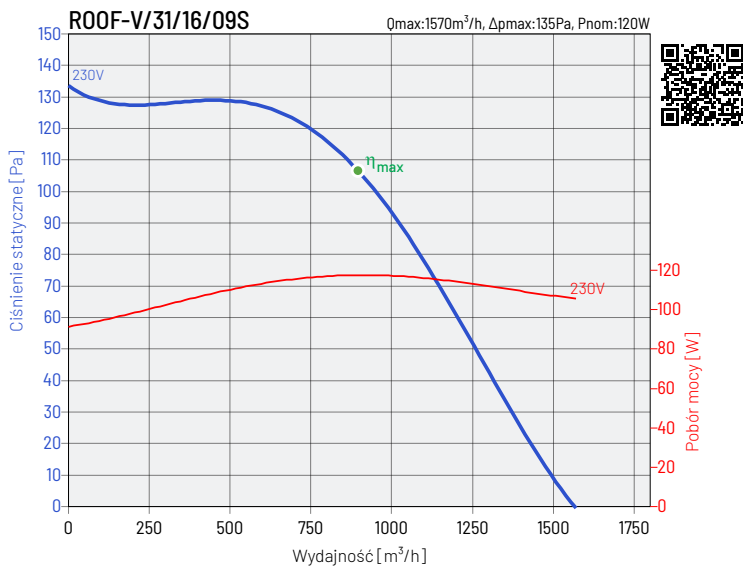
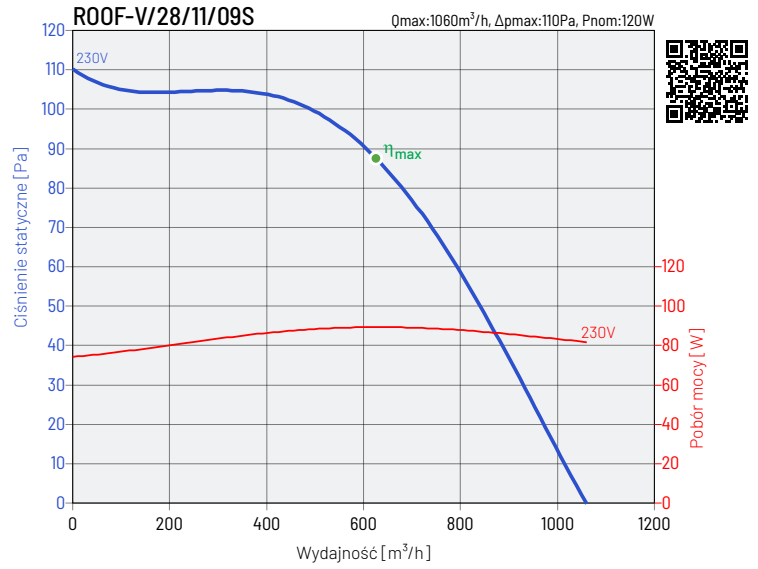
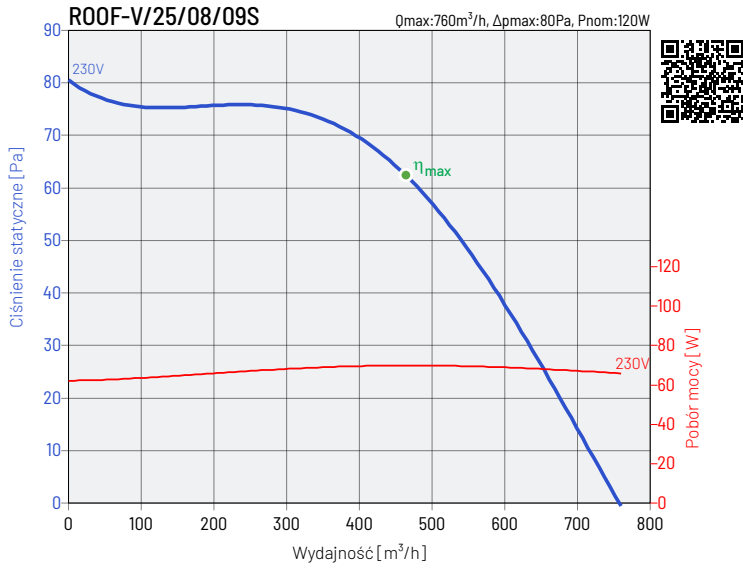


CHARAKTERYSTYKI PRACY WENTYLATORÓW



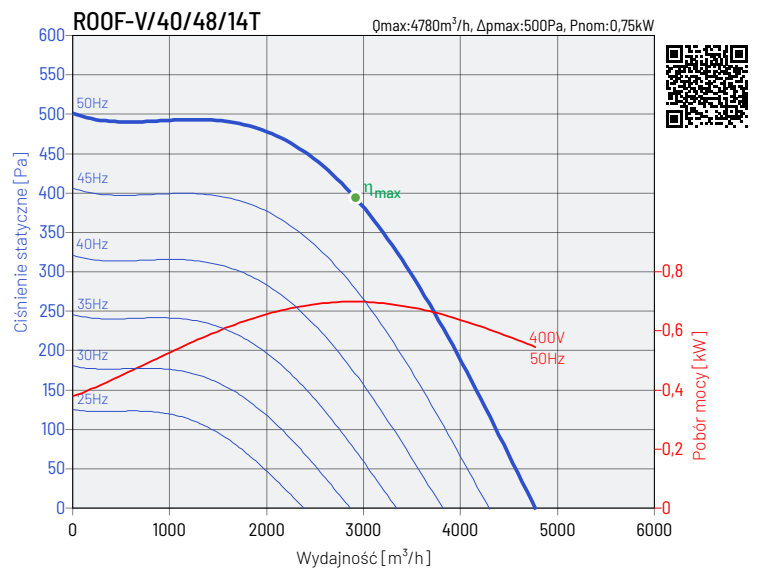
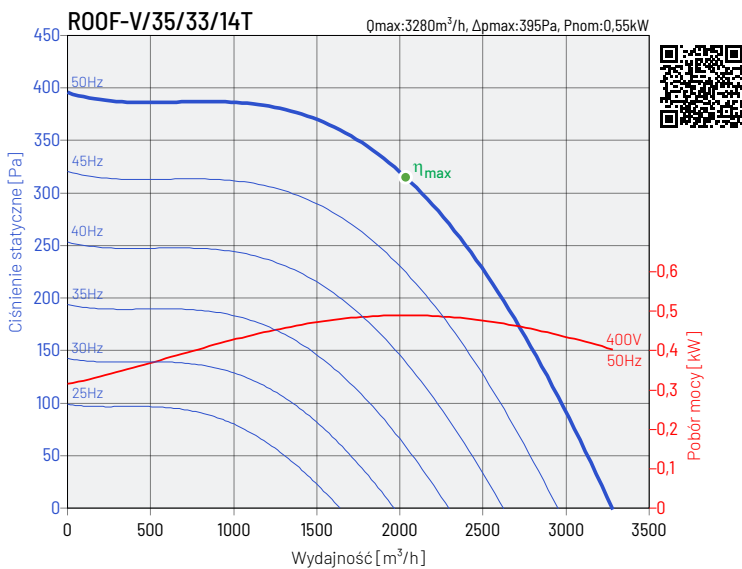
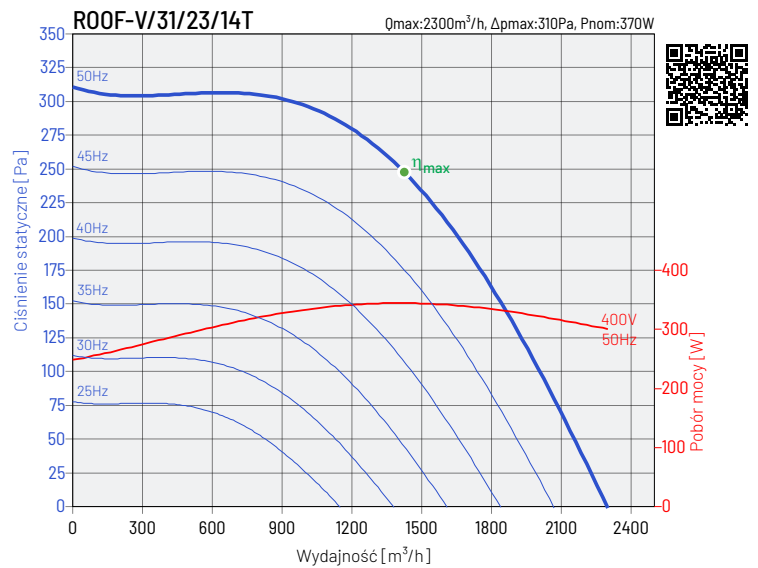
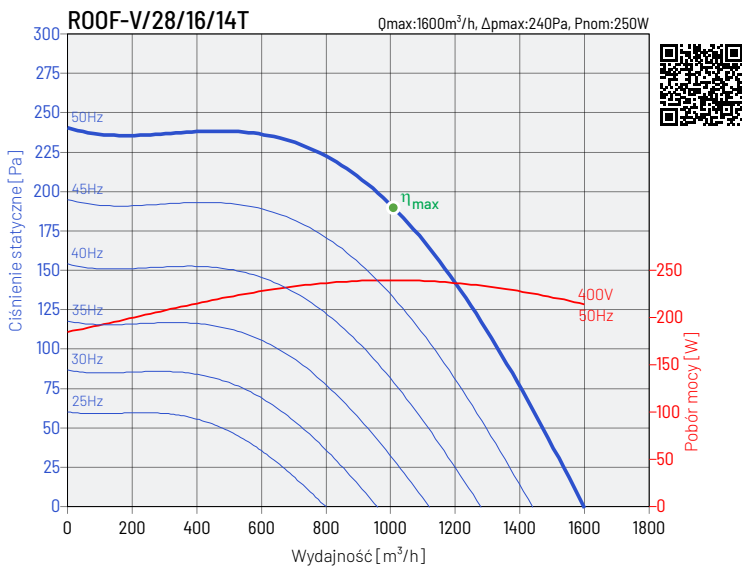
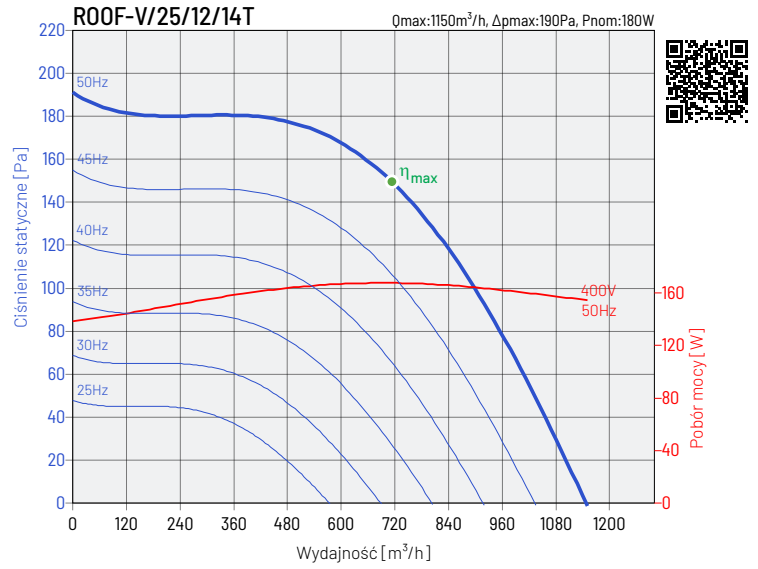
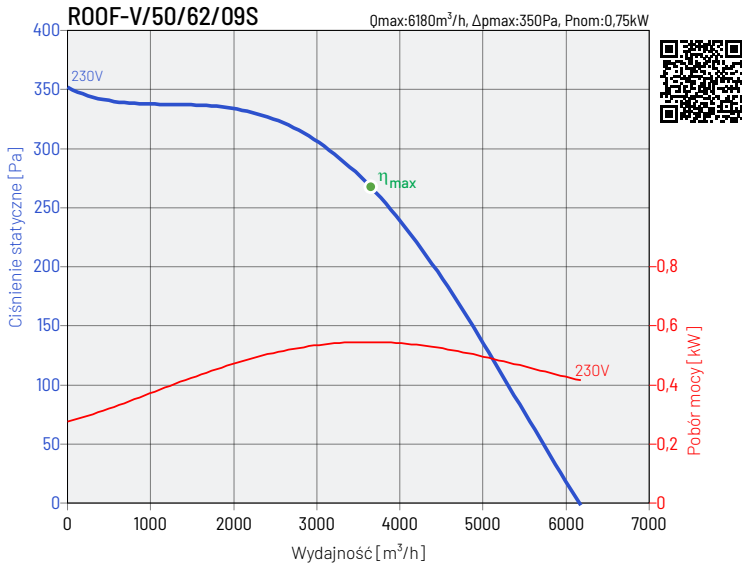


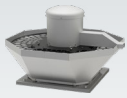
CHARAKTERYSTYKI PRACY WENTYLATORÓW



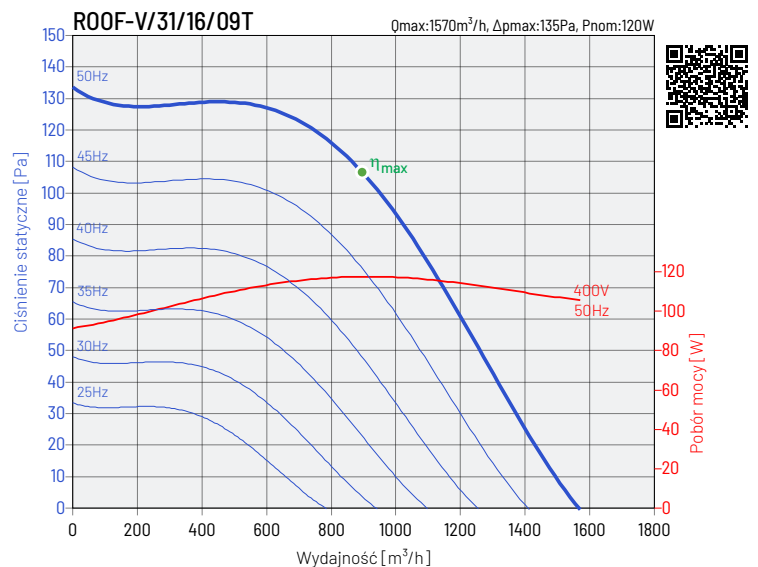
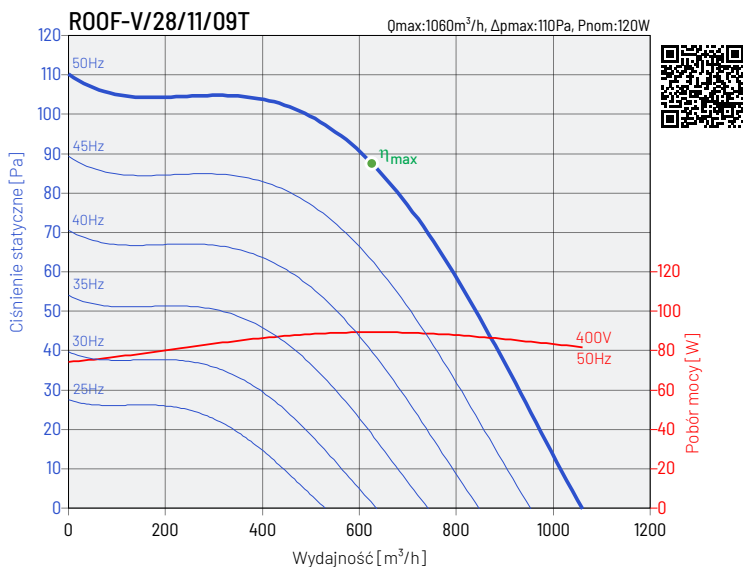
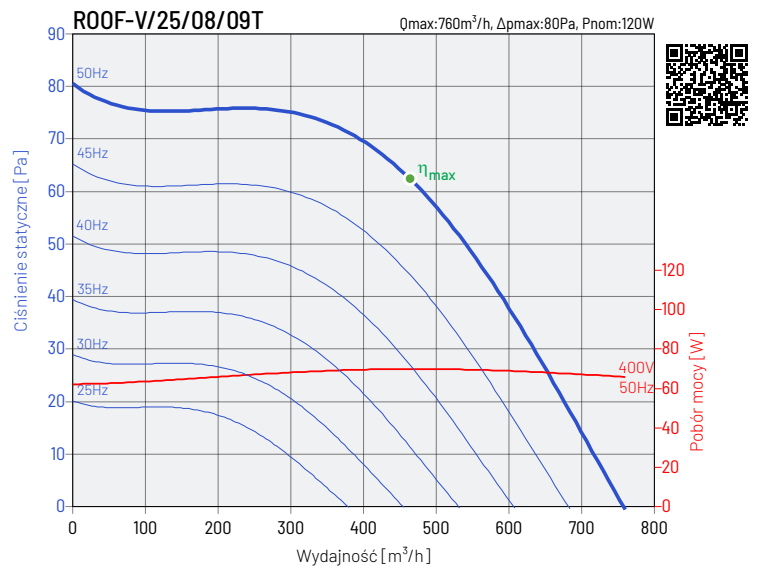
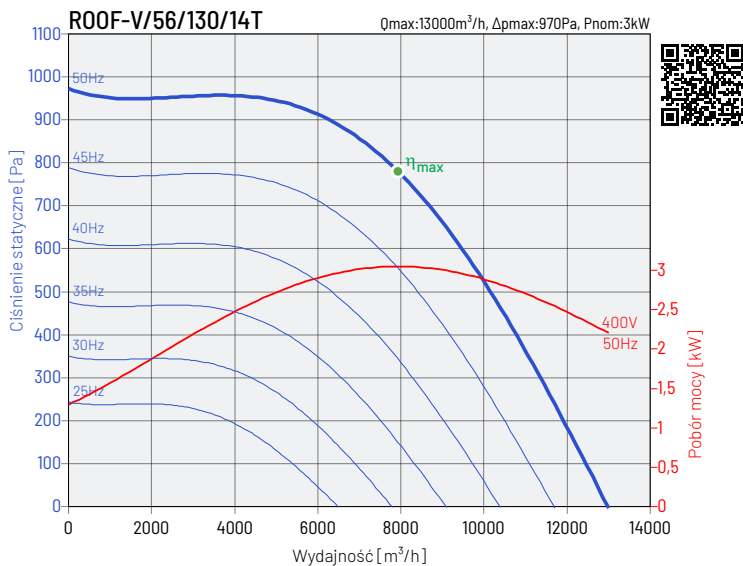
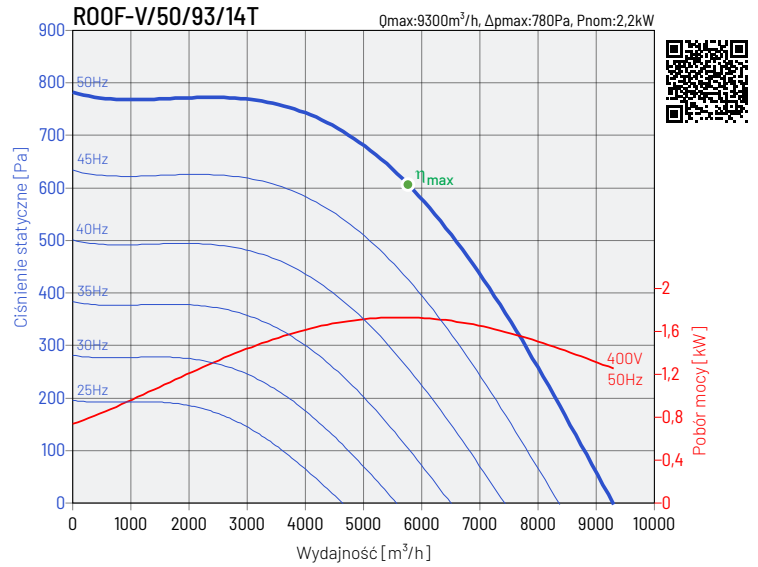
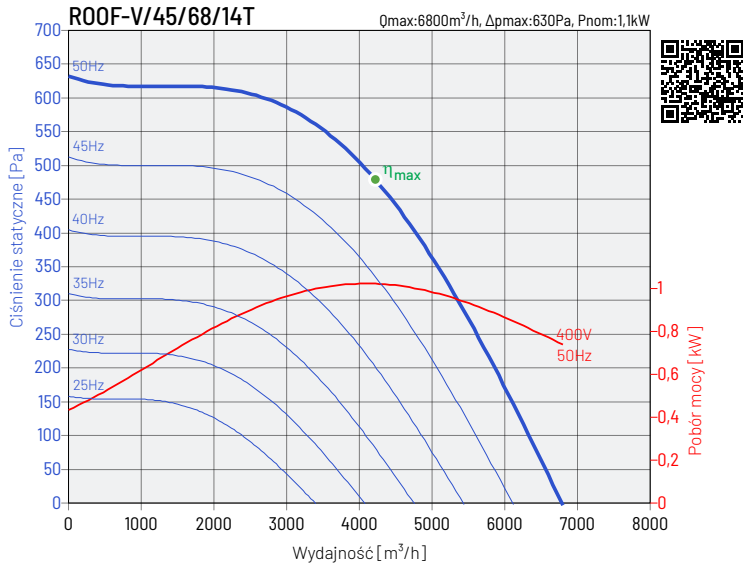


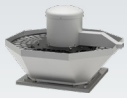
CHARAKTERYSTYKI PRACY WENTYLATORÓW



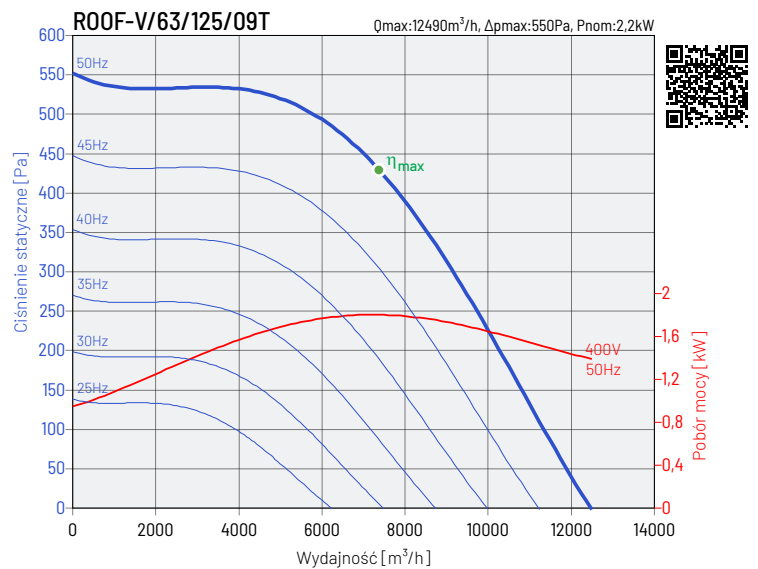
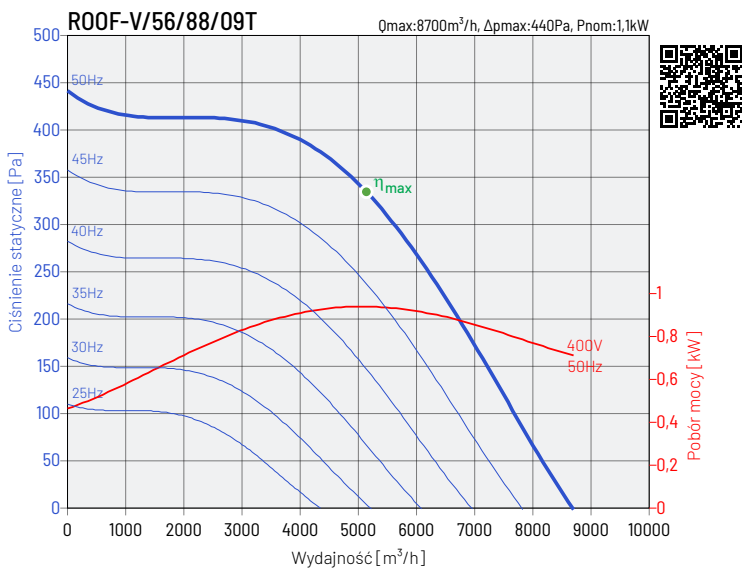
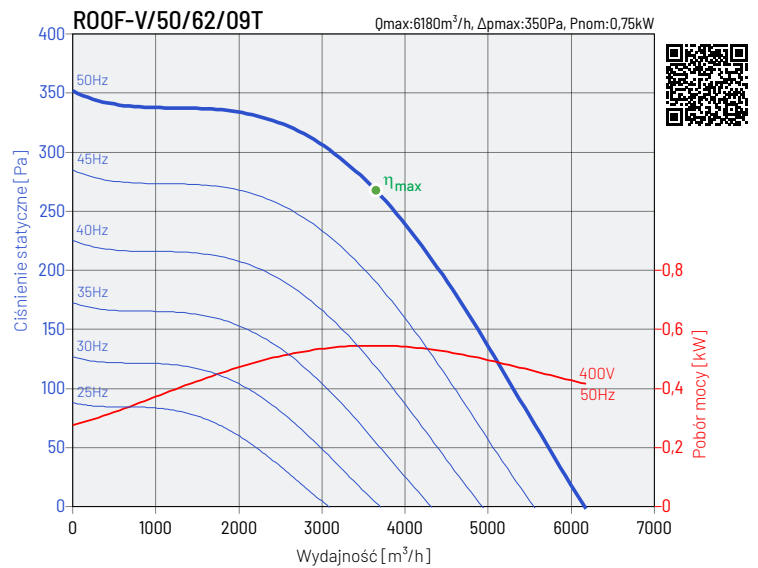
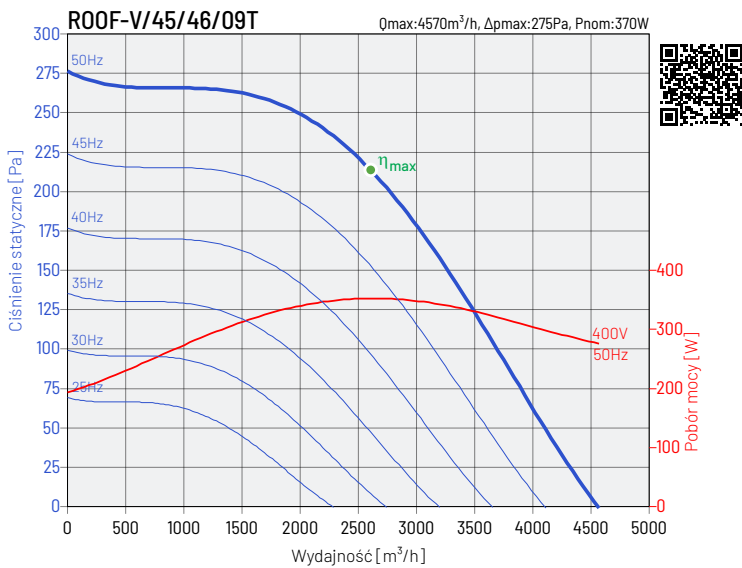
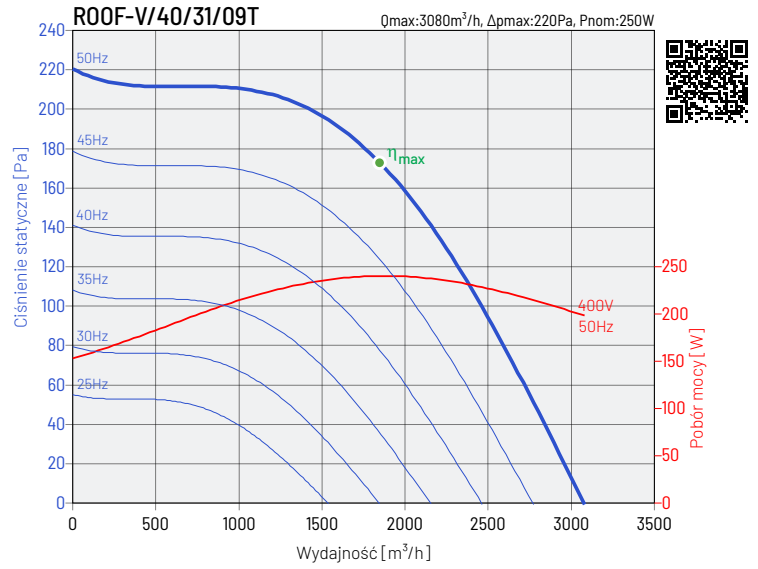
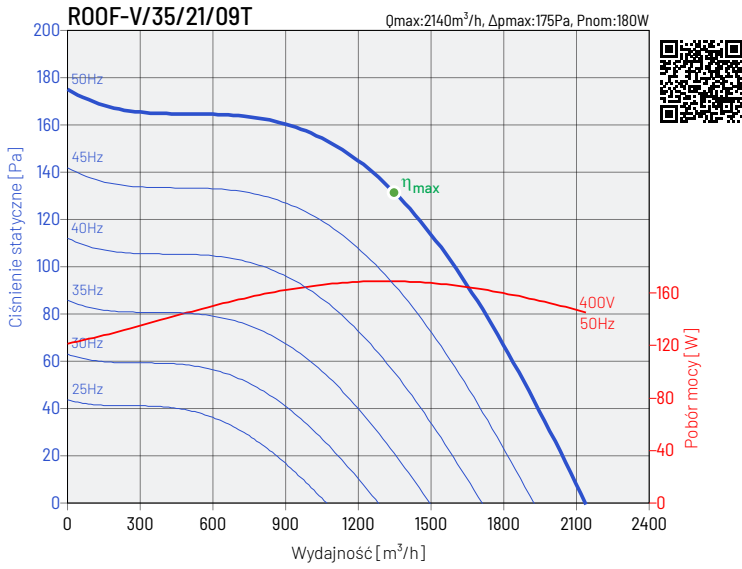


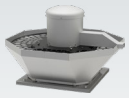
CHARAKTERYSTYKI PRACY WENTYLATORÓW



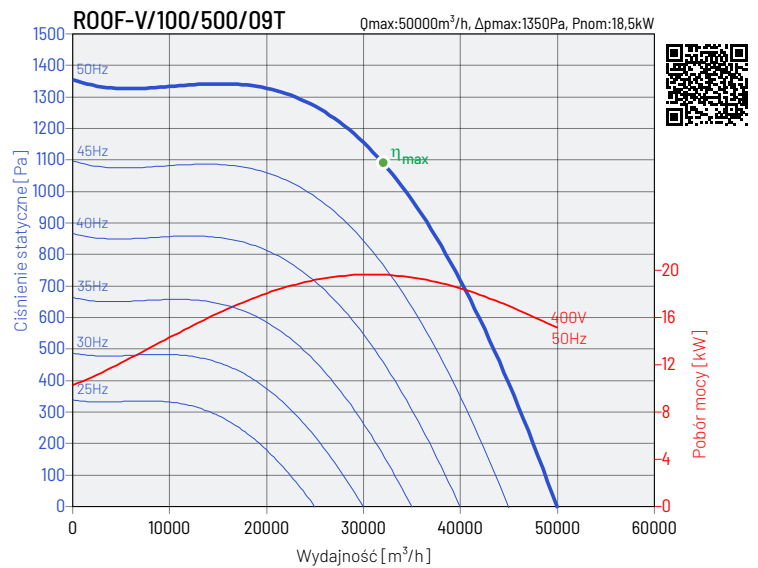
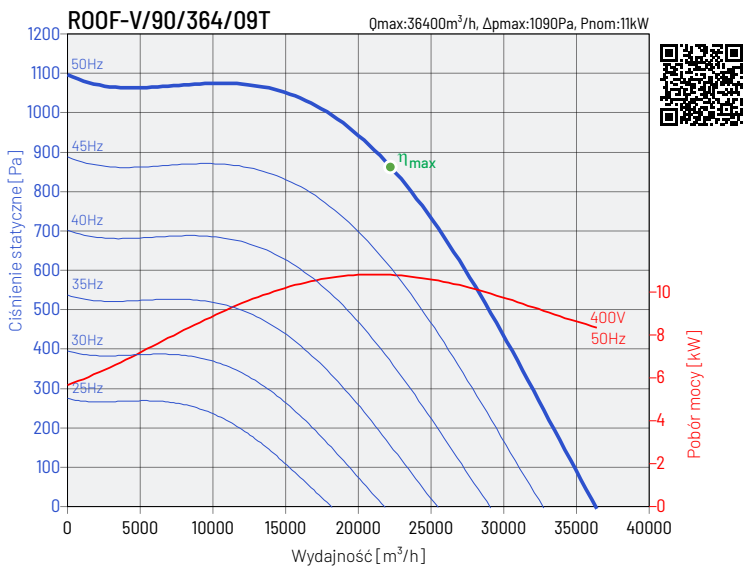
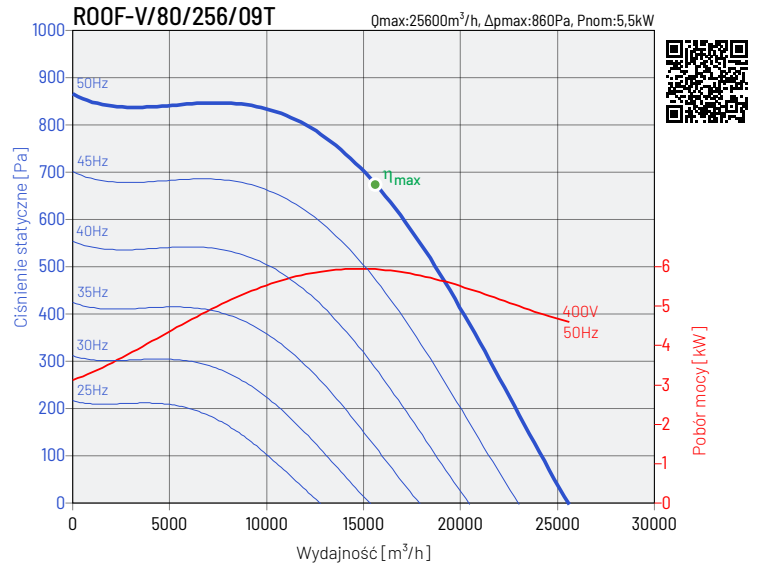
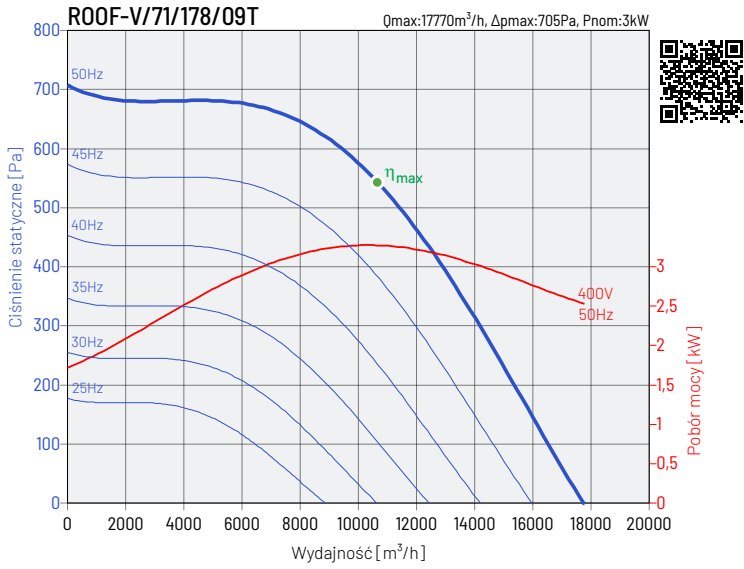


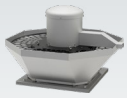
CHARAKTERYSTYKI PRACY WENTYLATORÓW





CHARAKTERYSTYKI PRACY WENTYLATORÓW

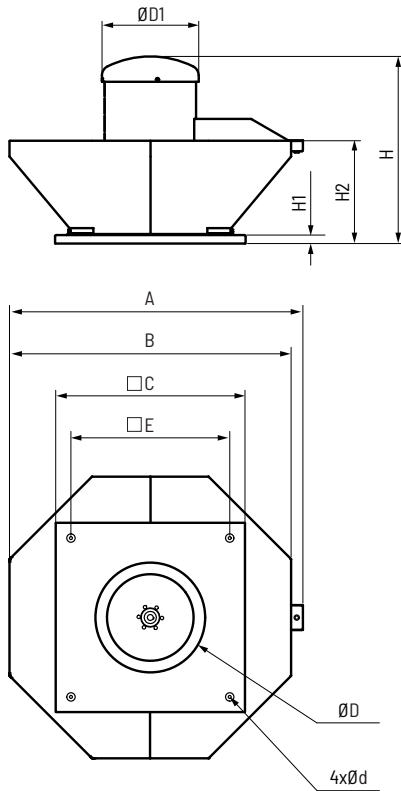




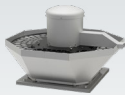
ROOF-V Wentylator dachowy

The power of AIR

WYMIARY



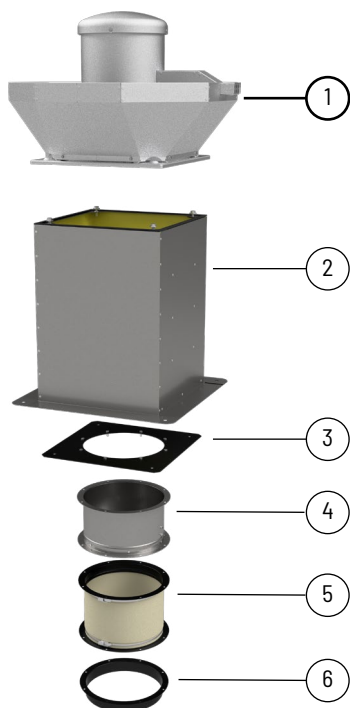
model wentylatora	A mm	B mm	C mm	$\varnothing d$ mm	$\varnothing D$ mm	$\varnothing D1$ mm	E mm	H mm	H1 mm	H2 mm
ROOF-V/25	589	535	435	12	200	318	330	442	15	246
ROOF-V/28	589	535	435	12	225	318	330	442	15	246
ROOF-V/31	723	668	435	12	250	318	330	477	15	261
ROOF-V/35	811	755	560	12	280	355	450	569	15	298
ROOF-V/40	904	848	560	12	315	355	450	586	15	298
ROOF-V/45	936	880	630	12	355	457	535	631	15	356
ROOF-V/50	1104	1048	710	12	400	457	590	801	17	393
ROOF-V/56	1234	1178	710	12	450	457	590	841	17	433
ROOF-V/63	1386	1330	900	14	500	457	750	884	40	484
ROOF-V/71	1556	1500	900	14	560	550	750	1044	40	543
ROOF-V/80	1736	1680	1100	14	630	550	840	1104	40	585
ROOF-V/90	1926	1870	1250	14	710	765	1000	1195	40	640
ROOF-V/100	2148	2094	1250	14	800	765	1000	1417	40	725



ROOF-V Wentylator dachowy



AKCESORIA MONTAŻOWE



1



2

wentylator	podstawa dachowa krótka RSS	podstawa dachowa RS	podstawa dachowa RS-I	podstawa dachowa RSA	podstawa dachowa RSA-I
ROOF-V/25	RSS 435	RS 435	RS-I 435	RSA 435	RSA-I 435
ROOF-V/28	RSS 435	RS 435	RS-I 435	RSA 435	RSA-I 435
ROOF-V/31	RSS 435	RS 435	RS-I 435	RSA 435	RSA-I 435
ROOF-V/35	RSS 560	RS 560	RS-I 560	RSA 560	RSA-I 560
ROOF-V/40	RSS 560	RS 560	RS-I 560	RSA 560	RSA-I 560
ROOF-V/45	RSS 630	RS 630	RS-I 630	RSA 630	RSA-I 630
ROOF-V/50	RSS 710	RS 710	RS-I 710	RSA 710	RSA-I 710
ROOF-V/56	RSS 710	RS 710	RS-I 710	RSA 710	RSA-I 710
ROOF-V/63	RSS 905	RS 905	RS-I 905	RSA 905	RSA-I 905
ROOF-V/71	RSS 905	RS 905	RS-I 905	RSA 905	RSA-I 905
ROOF-V/80	RSS 1100	RS 1100	RS-I 1100	RSA 1100	RSA-I 1100
ROOF-V/90	-	RS 1250	RS-I 1250	RSA 1250	RSA-I 1250
ROOF-V/100	-	RS 1250	RS-I 1250	RSA 1250	RSA-I 1250



1



3



4



5



6

wentylator	złącze P	klapa zwrotna KZD SE	złącze przeciw drganiowe ZDPO	króciec K
ROOF-V/25	P 435	KZD SE 435	ZDPO 435	K 435
ROOF-V/28	P 435	KZD SE 435	ZDPO 435	K 435
ROOF-V/31	P 435	KZD SE 435	ZDPO 435	K 435
ROOF-V/35	P 560	KZD SE 560	ZDPO 560	K 560
ROOF-V/40	P 560	KZD SE 560	ZDPO 560	K 560
ROOF-V/45	P 630	KZD SE 630	ZDPO 630	K 630
ROOF-V/50	P 710	KZD SE 710	ZDPO 710	K 710
ROOF-V/56	P 710	KZD SE 710	ZDPO 710	K 710
ROOF-V/63	P 905	KZD SE 905	ZDPO 905	K 905
ROOF-V/71	P 905	KZD SE 905	ZDPO 905	K 905
ROOF-V/80	P 1100	KZD SE 1100	ZDPO 1100	K 1100
ROOF-V/90	P 1250	KZD SE 1250	ZDPO 1250	K 1250
ROOF-V/100	P 1250	KZD SE 1250	ZDPO 1250	K 1250

Numery artykułów

43526520 RSS 435
43526530 RSS 560
43526540 RSS 630
43526550 RSS 710
43526560 RSS 905
43526570 RSS 1100
43526580 RSS 1250

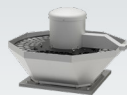
43526020 RS 435
43526030 RS 560
43526040 RS 630
43526050 RS 710
43526060 RS 905
43526070 RS 1100
43526080 RS 1250
43526721 RS-I 435
43526731 RS-I 560
43526741 RS-I 630
43526751 RS-I 710
43526761 RS-I 905
43526771 RS-I 1100
43526781 RS-I 1250

43526120 RSA 435
43526130 RSA 560
43526140 RSA 630
43526150 RSA 710
43526160 RSA 905
43526170 RSA 1100
43526180 RSA 1250
43526821 RSA-I 435
43526831 RSA-I 560
43526841 RSA-I 630
43526851 RSA-I 710
43526861 RSA-I 905
43526871 RSA-I 1100
43526881 RSA-I 1250

43526310 P 435
43526320 P 560
43526330 P 630
43526340 P 710
43526350 P 905
43526360 P 1100
43526370 P 1250
43527312 KZD SE 435
43527322 KZD SE 560
43527332 KZD SE 630
43527342 KZD SE 710
43527352 KZD SE 905
43527362 KZD SE 1100
43527372 KZD SE 1250

43527410 ZDPO 435
43527420 ZDPO 560
43527430 ZDPO 630
43527440 ZDPO 710
43527450 ZDPO 905
43527460 ZDPO 1100
43527470 ZDPO 1250

43526410 K 435
43526420 K 560
43526430 K 630
43526440 K 710
43526450 K 905
43526460 K 1100
43526470 K 1250

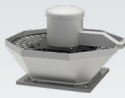


AKCESORIA ELEKTRYCZNE



wentylator	termostat ścienny	termostat kanałowy	czujnik temperatury	czujnik zanieczyszczenia	higrostat
	TS*	TK-21	do TK-21	SQA	HIG-2
ROOF-V/25/12/14S	TS	TK-21	Czujnik TK-21	SQA	HIG-2
ROOF-V/28/16/14S	TS	TK-21	Czujnik TK-21	SQA + DILM7-10	HIG-2 + DILM7-10
ROOF-V/31/23/14S	TS + DILM7-10	TK-21	Czujnik TK-21	SQA + DILM7-10	HIG-2 + DILM7-10
ROOF-V/35/33/14S	TS + DILM7-10	TK-21 + DILM7-10	Czujnik TK-21	SQA + DILM7-10	HIG-2 + DILM7-10
ROOF-V/40/48/14S	TS + DILM7-10	TK-21 + DILM7-10	Czujnik TK-21	SQA + DILM7-10	HIG-2 + DILM7-10
ROOF-V/45/68/14S	TS + DILM7-10	TK-21 + DILM7-10	Czujnik TK-21	SQA + DILM7-10	HIG-2 + DILM7-10
ROOF-V/25/08/09S	TS	TK-21	Czujnik TK-21	SQA	HIG-2
ROOF-V/28/11/09S	TS	TK-21	Czujnik TK-21	SQA	HIG-2
ROOF-V/31/16/09S	TS	TK-21	Czujnik TK-21	SQA	HIG-2
ROOF-V/35/21/09S	TS	TK-21	Czujnik TK-21	SQA	HIG-2
ROOF-V/40/31/09S	TS	TK-21	Czujnik TK-21	SQA + DILM7-10	HIG-2 + DILM7-10
ROOF-V/45/46/09S	TS + DILM7-10	TK-21	Czujnik TK-21	SQA + DILM7-10	HIG-2 + DILM7-10
ROOF-V/50/62/09S	TS + DILM7-10	TK-21 + DILM7-10	Czujnik TK-21	SQA + DILM7-10	HIG-2 + DILM7-10
ROOF-V/25/12/14T	TS + DILM7-10	TK-21 + DILM7-10	Czujnik TK-21	SQA + DILM7-10	HIG-2 + DILM7-10
ROOF-V/28/16/14T	TS + DILM7-10	TK-21 + DILM7-10	Czujnik TK-21	SQA + DILM7-10	HIG-2 + DILM7-10
ROOF-V/31/23/14T	TS + DILM7-10	TK-21 + DILM7-10	Czujnik TK-21	SQA + DILM7-10	HIG-2 + DILM7-10
ROOF-V/35/33/14T	TS + DILM7-10	TK-21 + DILM7-10	Czujnik TK-21	SQA + DILM7-10	HIG-2 + DILM7-10
ROOF-V/40/48/14T	TS + DILM7-10	TK-21 + DILM7-10	Czujnik TK-21	SQA + DILM7-10	HIG-2 + DILM7-10
ROOF-V/45/68/14T	TS + DILM7-10	TK-21 + DILM7-10	Czujnik TK-21	SQA + DILM7-10	HIG-2 + DILM7-10
ROOF-V/50/93/14T	TS + DILM7-10	TK-21 + DILM7-10	Czujnik TK-21	SQA + DILM7-10	HIG-2 + DILM7-10
ROOF-V/56/130/14T	TS + DILM7-10	TK-21 + DILM7-10	Czujnik TK-21	SQA + DILM7-10	HIG-2 + DILM7-10
ROOF-V/25/08/09T	TS + DILM7-10	TK-21 + DILM7-10	Czujnik TK-21	SQA + DILM7-10	HIG-2 + DILM7-10
ROOF-V/28/11/09T	TS + DILM7-10	TK-21 + DILM7-10	Czujnik TK-21	SQA + DILM7-10	HIG-2 + DILM7-10
ROOF-V/31/16/09T	TS + DILM7-10	TK-21 + DILM7-10	Czujnik TK-21	SQA + DILM7-10	HIG-2 + DILM7-10
ROOF-V/35/21/09T	TS + DILM7-10	TK-21 + DILM7-10	Czujnik TK-21	SQA + DILM7-10	HIG-2 + DILM7-10
ROOF-V/40/31/09T	TS + DILM7-10	TK-21 + DILM7-10	Czujnik TK-21	SQA + DILM7-10	HIG-2 + DILM7-10
ROOF-V/45/46/09T	TS + DILM7-10	TK-21 + DILM7-10	Czujnik TK-21	SQA + DILM7-10	HIG-2 + DILM7-10
ROOF-V/50/62/09T	TS + DILM7-10	TK-21 + DILM7-10	Czujnik TK-21	SQA + DILM7-10	HIG-2 + DILM7-10
ROOF-V/56/88/09T	TS + DILM7-10	TK-21 + DILM7-10	Czujnik TK-21	SQA + DILM7-10	HIG-2 + DILM7-10
ROOF-V/63/125/09T	TS + DILM7-10	TK-21 + DILM7-10	Czujnik TK-21	SQA + DILM7-10	HIG-2 + DILM7-10
ROOF-V/71/178/09T	TS + DILM7-10	TK-21 + DILM7-10	Czujnik TK-21	SQA + DILM7-10	HIG-2 + DILM7-10
ROOF-V/80/256/09T	TS + DILM15-10	TK-21 + DILM15-10	Czujnik TK-21	SQA + DILM15-10	HIG-2 + DILM15-10
ROOF-V/90/364/09T	TS + DILM25-10	TK-21 + DILM25-10	Czujnik TK-21	SQA + DILM25-10	HIG-2 + DILM25-10
ROOF-V/100/500/09T	TS + DILM40-10	TK-21 + DILM40-10	Czujnik TK-21	SQA + DILM40-10	HIG-2 + DILM40-10

* silnik jednofazowe wykorzystają wszystkie tory w styczniku



ROOF-V Wentylator dachowy

AKCESORIA ELEKTRYCZNE



wentylator	regulator transformatorowy 2-nastawowy	falownik
	SC2A	L
ROOF-V/25/12/14T	SC2A4-15L55	L 0,4kW
ROOF-V/28/16/14T	SC2A4-15L55	L 0,4kW
ROOF-V/31/23/14T	SC2A4-15L55	L 0,4kW
ROOF-V/35/33/14T	SC2A4-25L55	L 0,75kW
ROOF-V/40/48/14T	SC2A4-25L55	L 0,75kW
ROOF-V/45/68/14T	SC2A4-40L55	L 1,5kW
ROOF-V/50/93/14T	SC2A4-60L55	L 2,2kW
ROOF-V/56/130/14T	SC2A4-80L55	L 4,0kW
ROOF-V/25/08/09T	SC2A4-15L55	L 0,4kW
ROOF-V/28/11/09T	SC2A4-15L55	L 0,4kW
ROOF-V/31/16/09T	SC2A4-15L55	L 0,4kW
ROOF-V/35/21/09T	SC2A4-15L55	L 0,4kW
ROOF-V/40/31/09T	SC2A4-15L55	L 0,4kW
ROOF-V/45/46/09T	SC2A4-15L55	L 0,4kW
ROOF-V/50/62/09T	SC2A4-25L55	L 0,75kW
ROOF-V/56/88/09T	SC2A4-40L55	L 1,5kW
ROOF-V/63/125/09T	SC2A4-40L55	L 2,2kW
ROOF-V/71/178/09T	SC2A4-80L55	L 4,0kW
ROOF-V/80/256/09T	-	L 5,5kW
ROOF-V/90/364/09T	-	L 11,0kW
ROOF-V/100/500/09T	-	L 18,5kW

Numery artykułów

91040997 DILM7-10	40025270 SC2A4-15L55	40016302 L 0,4kW
91040666-42 DILM15-10	40025272 SC2A4-25L55	40016312 L 0,75kW
91040905 DILM25-10	40025274 SC2A4-40L55	40016322 L 1,5kW
91040666 DILM40-10	40025276 SC2A4-60L55	40016332 L 2,2kW
40025345 TS	40025278 SC2A4-80L55	40016352 L 4,0kW
40025320 TK-21		40016362 L 5,5kW
40025140 SQA		40016383 L 11,0kW
40025150 HIG-2		40016412 L 18,5kW